

DEPARTMENT OF THE ARMY TECHNICAL MANUAL

**ORGANIZATIONAL MAINTENANCE
REPAIR PARTS AND SPECIAL TOOLS LISTS
FILTER UNITS, GAS-PARTICULATE, EMD AND GED, 300 CFM, ABC-M6
FSN 4240-368-6127
FSN 4240-368-6126
AND
ABC-M6A1
FSN 4240-889-2317
FSN 4240-889-2316
Current as of 25 July 1972**

Headquarters Department of the Army, Washington, D.C.
26 October 1972

			Paragraph	Page	Figure No.
SECTION I.	INTRODUCTION				
	Scope		1	1	
	General		2	1	
	Explanation of columns		3	2	
	Special information.....		4	3	
	How to locate parts		5	3	
	Abbreviations		6	4	
	Reporting of equipment publication improvements.....		7	4	
II.	REPAIR PARTS LIST				
	Group 100. Blower assembly			9	1
	200. Electric motor installation.....			10	2
	300. Gasoline engine installation.....			11	3
	400. Top manifold.....			12	4
	500. Canister assembly			13	5
	600. Air inlet assembly.....			14	6
	700. Air outlet assembly			15	7
SECTION III.	SPECIAL TOOLS LIST-Not applicable				
SECTION IV.	FEDERAL STOCK NUMBER AND REFERENCE NUMBER INDEX.....			16	

**Section I.
INTRODUCTION**

1. Scope

This manual lists the repair parts required by the crew/operator for operation and those required for the performance of organizational maintenance of the ABC-M6 and ABC-M6A1 filter units.

2. General

This repair parts List is divided into the following sections:

a. Repair Parts List-Section II. A list of repair parts authorized at the organizational level for the performance of maintenance. The list also includes parts which must be removed for replacement of the authorized parts. Parts lists are composed of functional groups in ascending numerical sequence, with the parts in each group listed in figure and item number sequence.

b. Special Tools List-Section III. Not applicable.

* This manual supersedes TM 3-4240-241-20P, 4 May 1965; and TM 3-4240-207-20P, 3 August 1961 including all changes.

TAGO 3249A

This copy is a reprint which includes current pages from Change 1.

c. *Federal Stock Number and Reference Number Index-Section IV.* A list, in ascending numerical sequence, of all Federal stock numbers appearing in the listings, followed by a list, in alphameric sequence, of all reference numbers appearing in the listings. Federal stock numbers and reference numbers are cross-referenced to each illustration figure and item number appearance.

3. Explanation of Columns

The following provides an explanation of columns found in the tabular listings.

a. *Source, Maintenance, and Recoverability Codes (SMR), (5 Column Positions).*

(1) *Source codes (positions 1 and 2).* This column position indicates the source for the listed items. Source codes are:

Code	Explanation
PA	Item procured and stocked for anticipated or known usage.
PB	Item procured and stocked for insurance purposes because essentially dictates that a minimum quantity be available in the supply systems.
PC	Item procured and stocked and which otherwise would be coded PA except that it is deteriorative in nature.
PD	Support item, excluding support equipment, procured for initial issue or outfitting and stocked only for subsequent or additional initial issues or outfittings. Not subject to automatic replenishment.
PE	Support equipment procured and stocked for initial issue or outfitting to specified maintenance repair activities.
PF	Support equipment which will not be stocked but which will be centrally procured on demand.
PG	Item procured and stocked to provide for sustained support for the life of the equipment. It is applied to an item peculiar to the equipment which, because of probable discontinuance or shutdown of production facilities, would prove uneconomical to reproduce at a later time.
KD	Item of a depot overhaul/repair kit and not purchased separately. A depot kit is defined as a kit that provides items required at the time of overhaul or repair.
KF	Item of a maintenance kit and not purchased separately. A maintenance kit is defined as a kit that provides an item that can be replaced at organizational or intermediate levels of maintenance.
KB	Item included in both a depot overhaul/repair kit and a maintenance kit.
MO	Item to be manufactured or fabricated at organizational level.
MF	Item to be manufactured or fabricated at the direct support maintenance level.
MH	Item to be manufactured or fabricated at the general support maintenance level.
MD	Item to be manufactured or fabricated at depot maintenance level.

Code	Explanation
AO	Item to be assembled at organizational level.
AF	Item to be assembled at the direct support maintenance level.
AH	Item to be assembled at the general support maintenance level.
AD	Item to be assembled at depot maintenance level.
XA	Item is not procured or stocked because the requirements for the item will result in the replacement of the next higher assembly.
XB	Item is not procured or stocked. If not available through salvage, requisition it.
XC	Installation drawing, diagram, instruction sheet, field service drawing, that is identified by a manufacturer's part number.

NOTE

Cannibalization or salvage may be used as a source of supply for any items source coded above except those coded XA and aircraft support items as restricted by AR 700-42.

(2) *Maintenance codes (positions 3 and 4).*

(a) *Position 3.* The maintenance code entered in the column's third position indicates the lowest maintenance level authorized to remove, replace, and use the support item. Capabilities of higher maintenance categories are considered equal or better. Maintenance codes are:

Code	Explanation
C	Crew/operator
O	Organizational maintenance
F	Direct support maintenance
H	General support maintenance
D	Depot maintenance

(b) *Position 4.* The maintenance code entered in the column's fourth position indicates whether the item is to be repaired and identifies the lowest maintenance level with the capability to perform complete repair (i.e., all authorized maintenance functions). Capabilities of higher maintenance categories are considered equal or better. Maintenance codes are:

Code	Explanation
O	Organizational maintenance
F	Direct support maintenance
H	General support maintenance
D	Depot maintenance
Z	Non-repairable. No repair is authorized

(3) *Recoverability code (position 5).* This column position indicates whether unserviceable items should be returned for recovery or salvage. Recoverability codes are:

Code	Explanation
Z	Nonrepairable item. When unserviceable, condemn it and dispose of it at the level indicated in position 3.

<i>Code</i>	<i>Explanation</i>
F	Repairable item. When uneconomically repairable, condemn it and dispose of it at the direct support level.
H	Repairable item. When uneconomically repairable, condemn it and dispose of it at the general support level.
D	Repairable item. When beyond lower level repair capability, return it to depot. Condemnation and disposal is not authorized below depot level.
L	Repairable item. Repair, condemnation, and disposal are not authorized below depot/specialized repair activity level.
A	Item requires special handling or condemnation procedures because of specific reasons (i.e., precious metal content, high-dollar value, critical material or hazardous material). Refer to appropriate manuals/directives for specific instructions. <ul style="list-style-type: none"> b. <i>Federal Stock Number.</i> This column indicates the Federal stock number assigned to the item and will be used for requisitioning purposes. c. <i>Description.</i> This column indicates the Federal item name and a minimum description required to identify the item. The last line indicates the reference number followed by the applicable Federal supply code for manufacturer (FSCM) in parentheses. The FSCM is used as an element in item identification to designate the manufacturer or distributor or Government agency; etc., and is identified in SB 708-42. d. <i>Unit of Measure (U/M).</i> This column indicates the standard or basic quantity by which the listed item is used in performing the actual maintenance function. This measure is expressed by a two-character alphabetical abbreviation; e.g., ea for each, and is the basis used to indicate quantities and allowances in subsequent columns. When the unit of measure differs from the unit of issue, the lowest unit of issue that will satisfy the required units of measure will be requisitioned. e. <i>Quantity Incorporated in Unit.</i> This column indicates the quantity of the item used in the breakout shown on the illustration figure, which is prepared for a functional group, subfunctional group, or an assembly. A V appearing in this column in lieu of a quantity indicates that no specific quantity is applicable; e.g., shims, spacers, etc. f. <i>15-Day Organizational Maintenance Allowances.</i> <ul style="list-style-type: none"> (1) An asterisk (*) entered in the allowance subcolumns indicates that the repair part is authorized for use at the organizational level, and will be

requisitioned on an as-required basis until stockage is based on demand in accordance with AR 710-2.

(2) Major Army commanders are authorized to approve reductions in the range of support items authorized for use in units within their commands. Recommendations for increases, in the range of items authorized for use, should be forwarded to the Commanding Officer, Edgewood Arsenal, ATTN: SMUEA-DE-ETL, Edgewood Arsenal, MD 21010, for action on such recommendations. Changes approved will be reflected in a revision to the manual.

g. *Illustration.* This column is divided as follows:

(1) *Figure number.* This column indicates the figure number of the illustration on which the item is shown.

(2) *Item number.* This column indicates the callout number used to reference the item on the illustration.

4. Special Information

a. Action change codes indicated in the lefthand margin of the listing page denote the following:

N-Indicates an added item

C-Indicates a change in data

R-Indicates a change in FSN only

b. The following publications pertain to the ABC-M6 and ABC-M6A1 filter units and their components:

TM 3-4240-207-12	Operator's and Organizational Maintenance Manual for Filter Unit, gas particulate, GED, 300 CFM, ABC-M6A1 and EMD, 300 CFM, ABC-M6A1.
------------------	---

TM 3-4240-241-12	Operator's and Organizational Maintenance Manual: Filter Unit, gas-particulate, 300 CFM, EMD, ABC-M6 (end item codes 556 & 559).
------------------	--

c. The illustrations in this manual are identical to those published in TM 3-4240-241-34P. Only those parts assigned a maintenance code O are listed in the tabular listing. Only illustrations containing organizational authorized items appear in this manual.

5. How to Locate Repair Parts

a. When Federal stock number or reference number is unknown:

(1) *First.* Using the table of contents, determine the functional group within which the repair part belongs; i.e., blower assembly, electric motor installation; etc. This is necessary since illustrations

are prepared for functional groups and listings are divided into the same groups.

(2) *Second.* Find the illustration covering the group to which the repair part belongs.

(3) *Third.* Identify the repair part on the illustration and note the illustration figure and item number of the repair part.

(4) *Fourth.* Using the repair parts listing, find the functional group to which the repair part belongs, and locate the illustration figure and item number noted on the illustration.

b. When the Federal stock number or reference number is known:

(1) *First.* Using the index of Federal stock numbers and reference Numbers, find the pertinent Federal stock number or reference number. This index is in ascending FSN sequence followed by a list of reference numbers in ascending alphameric sequence, cross-referenced to the illustration figure number and item number.

(2) *Second.* Using the repair parts listing, find the functional group of the repair part and the illustration figure number and item number referenced in the index of Federal stock numbers and reference numbers.

6. Abbreviations

bg bag
cad pltd..... cadmium plated
cad or zinc pltd cadmium or zinc plated
cn can

7. Reporting of Equipment Publication Improvements

The reporting of errors, omissions, and recommendations for improving this publication by the individual user is encouraged. Reports should be submitted on DA Form 2028 (Recommended Changes to Publications) and forwarded direct to: Commanding Officer, Edgewood Arsenal, ATTN: SMUEA-DE-ETL, Edgewood Arsenal, MD 21010.

**Section II
REPAIR PARTS LIST**

(1) SMR CODE	(2) FEDERAL STOCK NUMBER	(3) DESCRIPTION <i>Reference Number & Mfr. Code</i>	(4) UNIT OF MEAS	(5) QTY INC IN UNIT	(6) 15-DAY ORG MAINT ALLOWANCE				(7) ILLUSTRATION	
					(a) 1-5	(b) 6-20	(c) 21-50	(d) 51-100	(a) FIGURE NO.	(b) ITEM NO.
		GROUP 100-BLOWER ASSEMBLY								
C PA OZ Z	5330-515-5687	GASKET, RUBBER: 5 per bag B5-19-679 (81361).	bg	1	*	*	*	*	1	9
C PA OZ Z	6145-112-8671	GROUP 200-ELECTRIC MOTOR INSTALLATION CABLE, POWER, ELECTRIC: 10 ft. long JC580 (81348).	ft	10	*	*	*	*	2	5
C PA OZ Z	5935-681-4819	CONNECTOR, PLUG, ELECTRICAL: 7056 (74545).	ea	1	*	*	*	*	2	6
C PA OZ Z	5305-984-6210	GROUP 300-GASOLINE ENGINE INSTALLATION SCREW, MACHINE: Steel, pan head, slotted, cad or zn pltd, No. 10-24 NC-2AxY2 long MS35206-263 (96906).	ea	2	*	*	*	*	3	6
C PA OZ Z	5310-934-9758	NUT, PLAIN, HEXAGON: ad or zn pltd, No. 10-24 NC-2B MS35649-202 (96906).	ea	2	*	*	*	*	3	7
C PA OZ Z	5310-045-3296	WASHER, LOCK: Steel. Cad or zn pltd, No. 10 Nominal size MS35337-24 (96906).	ea	2	*	*	*	*	3	8
C PA OZ Z	5330-066-4475	GASKET, EXHAUST TUBE: B5-19-1812 (81361).	ea	1	*	*	*	*	3	9
C PA OZ Z	4240-066-4476	CONNECTION, EXHAUST TUBE: B5-19-1813 (81361).	ea	1	*	*	*	*	3	10
C PA OZ Z	4720-387-9800	HOSE ASSEMBLY, METAL: C5-19-965 (81361).	ea	1	*	*	*	*	3	11
C PA OZ Z	4240-0763473	ADAPTER, GASOLINE CAN: C5-19-1816 (81361).	ea	1	*	*	*	*	3	12
C PA OZ Z	4730-187-0485	NIPPLE, TUBE: Steel. Cad pltd, 1/2-20 UNF-3A AN8155 (88044).	ea	2	*	*	*	*	3	13
N XA		FILLING PLUG ASSEMBLY: MIL-C-1283 (81349).		1					3	14
C PA OZ Z	4720-889-2368	HOSE ASSEMBLY, RUBBER: MS28741-5-1200 (96906).	ea	1	*	*	*	*	3	15

(1) SMR CODE	(2) FEDERAL STOCK NUMBER	(3) DESCRIPTION <i>Reference Number & Mfr. Code</i>	(4) UNIT OF MEAS	(5) QTY INC IN UNIT	(6) 15-DAY ORG MAINT ALLOWANCE				(7) ILLUSTRATION	
					(a) 1-5	(b) 6-20	(c) 21-50	(d) 51-100	(a) FIGURE NO.	(b) ITEM NO.
C PA OZ Z	4730-187-0842	ADAPTER, STRAIGHT, PIPE TO TUBE: 1/8 NPTx1/2-20 UNF-3A AN816-5 (88044).	ea	1	*	*	*	*	3	16
C PA OZ Z	4730-186-7797	NIPPLE, PIPE: Brass, cad pltd, 1/8-27 NPTx1 in. long AN911-1 (88044).	ea	1	*	*	*	*	3	17
GROUP 400-TOP MANIFOLD										
C PA OZ Z	5310-877-5795	NUT, SELF LOCKING, HEXAGON: Steel. Cad pltd, 1/2-20 UNF-3B MS21044N8 (96906).	ea	2	*	*	*	*	4	1
C PA OZ Z	5310-809-3079	WASHER, FLAT: Steel, round, cad pltd, 1/2 nominal size MS27183-19 (96906).	ea	2	*	*	*	*	4	2
C PA OZ Z	5306-639-0461	BOLT, SLIDE: 1/2-20 UNF-3Ax1 3/4 long B5-19-682 (81361).	cn	2	*	*	*	*	4	4
C PA OZ Z	5315-013-7214	PIN, COTTER: 1/8x1 3/4 long MS24665-359 (96906).	ea	4	*	*	*	*	4	7
C XB OZ Z		HANDLE, CARRYING: B5-19-960 (81361).	ea	4					4	8
C PA OZ Z	5305-984-4984	SCREW, MACHINE: Steel, pan head slotted, cad or zinc plated, No. 6-32 NC-2Ax5/16 long MS35206-227 (96906).	ea	1	*	*	*	*	4	9
C PA OZ Z	5310-209-0788	WASHER, LOCK: Flat, external teeth, cad or zinc pltd, No. 6 nominal size MS35335-30 (96906).	ea	1	*	*	*	*	4	10
C PA OZ Z	5310-082-1404	WASHER, FLAT: round, cad pltd, No. 6 nominal size MS27183-6 (96906).	ea	1	*	*	*	*	4	11
C PA OZ Z	5305-984-6208	SCREW, MACHINE: Steel, pan head, slotted, cad or zinc pltd, No. 10-24 NC-2Ax3/8 long MS35206-261 (96906).	ea	2	*	*	*	*	4	12
C PA OZ Z	5310-596-7691	WASHER, LOCK: Flat, external teeth, cad or zinc pltd, No. 10 nominal size MS35335-32 (96906).	ea	4	*	*	*	*	4	13
C PA OZ Z	4240-066-4480	REGULATOR, DIAL: B5-19-1803 (81361).	ea	1	*	*	*	*	4	14

(1) SMR CODE	(2) FEDERAL STOCK NUMBER	(3) DESCRIPTION <i>Reference Number & Mfr. Code</i>	(4) UNIT OF MEAS	(5) QTY INC IN UNIT	(6) 15-DAY ORG MAINT ALLOWANCE				(7) ILLUSTRATION	
					(a) 1-5	(b) 6-20	(c) 21-50	(d) 51-100	(a) FIGURE NO.	(b) ITEM NO.
C PA OZ Z	5310-457-8237	NUT, PLAIN, WING: No. 4-40 UNC-2B FFN845 (81348).	ea	1	*	*	*	*	4	15
N PA OZ Z	5305-984-6211	SCREW, MACHINE: cross recess, No. 10-24 UNC-2Ax% lg MS35206-264 (96906).	ea	2	*	*	*	*	4	18
C PA OZ Z	4240-340-2669	DAMPER, FLUE: B5-19-926 (81361).	ea	1	*	*	*	*	4	19
C PA OZ Z	4240-343-7931	SHAFT: B5-19-925 (81361).	ea	1	*	*	*	*	4	20
GROUP 500--CANISTER ASSEMBLY										
C PA OZ Z	4720-066-4519	HOSE, AIR DUCT: 5 1/2 in. outside diam C5-19-1800-2 (81361).	ea	1	*	*	*	*	5	3
C PA OZ Z	4720-066-4479	HOSE, AIR DUCT: 4% in. outside diameter C5-19-1800-1 (81361).	ea	1	*	*	*	*	5	4
C XA		CLAMP, HOSE: MS35842-16 (96906).	ea	4					5	5
C XB OZ Z		BOLT, UPPER: B5-19-719 (81361).	ea	8					5	6
C XB OZ Z		TURNBUCKLE: B5-19-793 (81361).	ea	8					5	7
C XB OZ Z		BOLT, LOWER: B5-19-792 (81361).	ea	8					5	8
C PA OZ Z	4240-256-9094	FILTER, GAS: M10 D5-19-673 (81361).	ea	2	*	*	*	*	5	10
C PA OZ Z	4240-050-8781	FILTER, PARTICULATE: M9A1 D5-19-1821 (81361).	ea	2	*	*	*	*	5	11
C XB OZ Z		MANIFOLD, INTAKE: D5-19-665 (81361).	ea	1					5	12
C XB OZ Z		MANIFOLD, BOTTOM: D5-19-701 (81361).	ea	1					5	13
C XB OF F		CONNECTOR, ELBOW ASSEMBLY: B5-19-716 (81361).	ea	1					5	14
C PA OZ Z	5330-515-5687	GASKET, RUBBER: 5 per bag B5-19-679 (81361).	bg	1	*	*	*	*	5	19
C AF OF F		GROUP 600-AIR INLET ASSEMBLY HOSE ASSEMBLY, AIR INLET: C5-19-735 (81361).	ea	1					6	

(1) SMR CODE	(2) FEDERAL STOCK NUMBER	(3) DESCRIPTION <i>Reference Number & Mfr. Code</i>	(4) UNIT OF MEAS	(5) QTY INC IN UNIT	(6) 15-DAY ORG MAINT ALLOWANCE				(7) ILLUSTRATION	
					(a) 1-5	(b) 6-20	(c) 21-50	(d) 51-100	(a) FIGURE NO.	(b) ITEM NO.
C PA OZ Z	4730-278-2505	CLAMP, HOSE: 421-75-500W (98625).	ea	2	*	*	*	*	6	1
C PA OZ Z	4720-542-3460	HOSE, AIR DUCT: 5 in. dia x 10 ft. long C5-19-1796 (81361).	ea	1	*	*	*	*	6	2
C PA OZ Z	4240-368-6288	COVER ASSEMBLY: C5-19-737 (81361). GROUP 700-AIR OUTLET ASSEMBLY	ea	1	*	*	*	*	6	3
C AF OF F		HOSE, ASSEMBLY, AIR OUTLET: C5-19-736 (81361).	ea	1					7	
C PA OZ Z	4730-278-2505	CLAMP, HOSE: 421-75-500W (98625).	ea	2	*	*	*	*	7	1
C PA OZ Z	4720-542-3460	HOSE, AIR DUCT: 5 in. dia x 10 ft. long C5-19-1796 (81361).	ea	1	*	*	*	*	7	2
C PA OZ Z	5330-515-5687	GASKET, RUBBER: 5 per bag B5-19-679 (81361).	bg	1	*	*	*	*	7	7

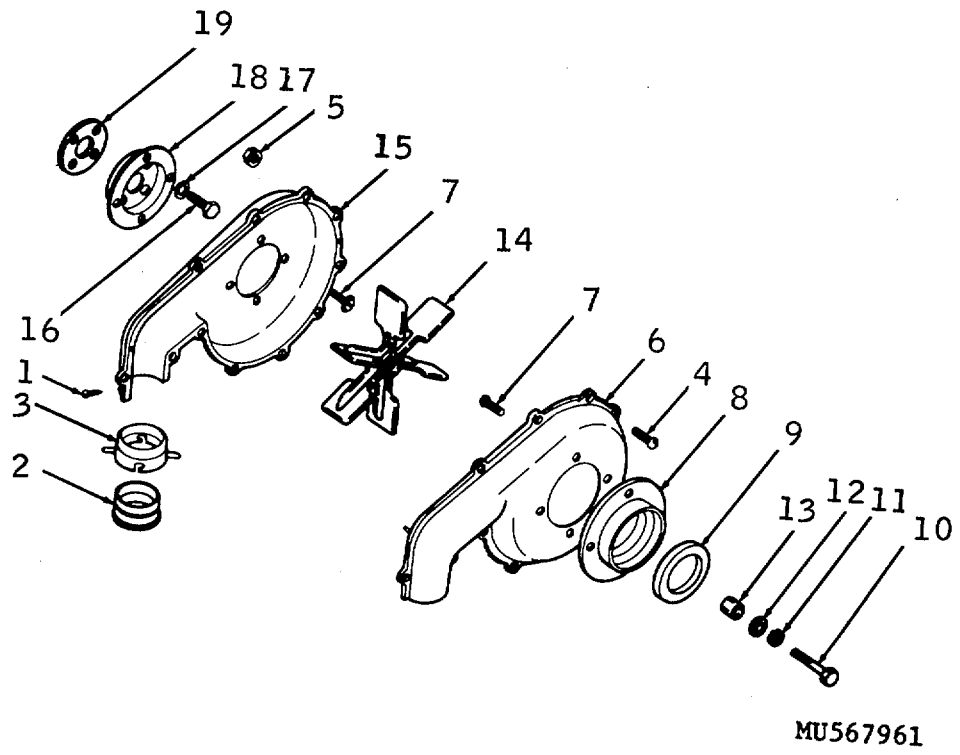


Figure 1. Blower assembly group.

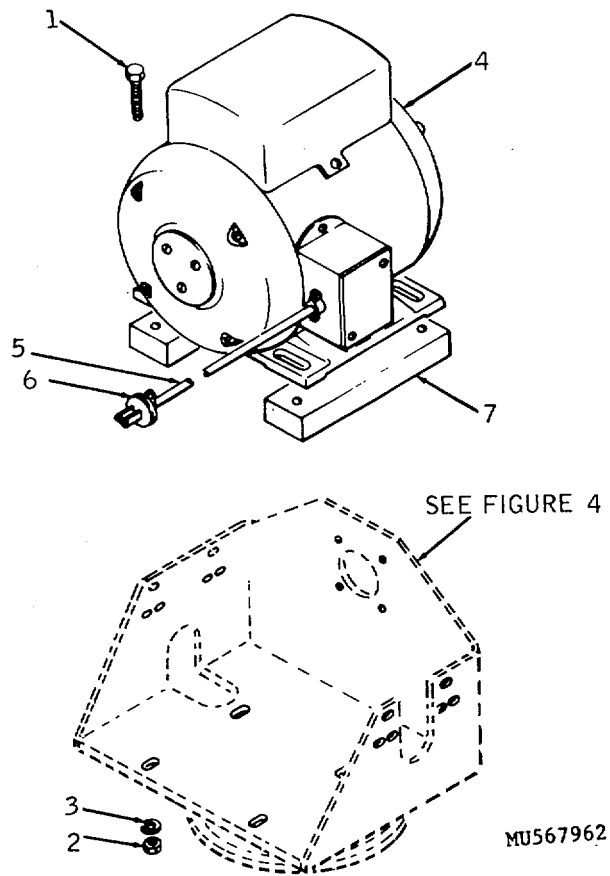
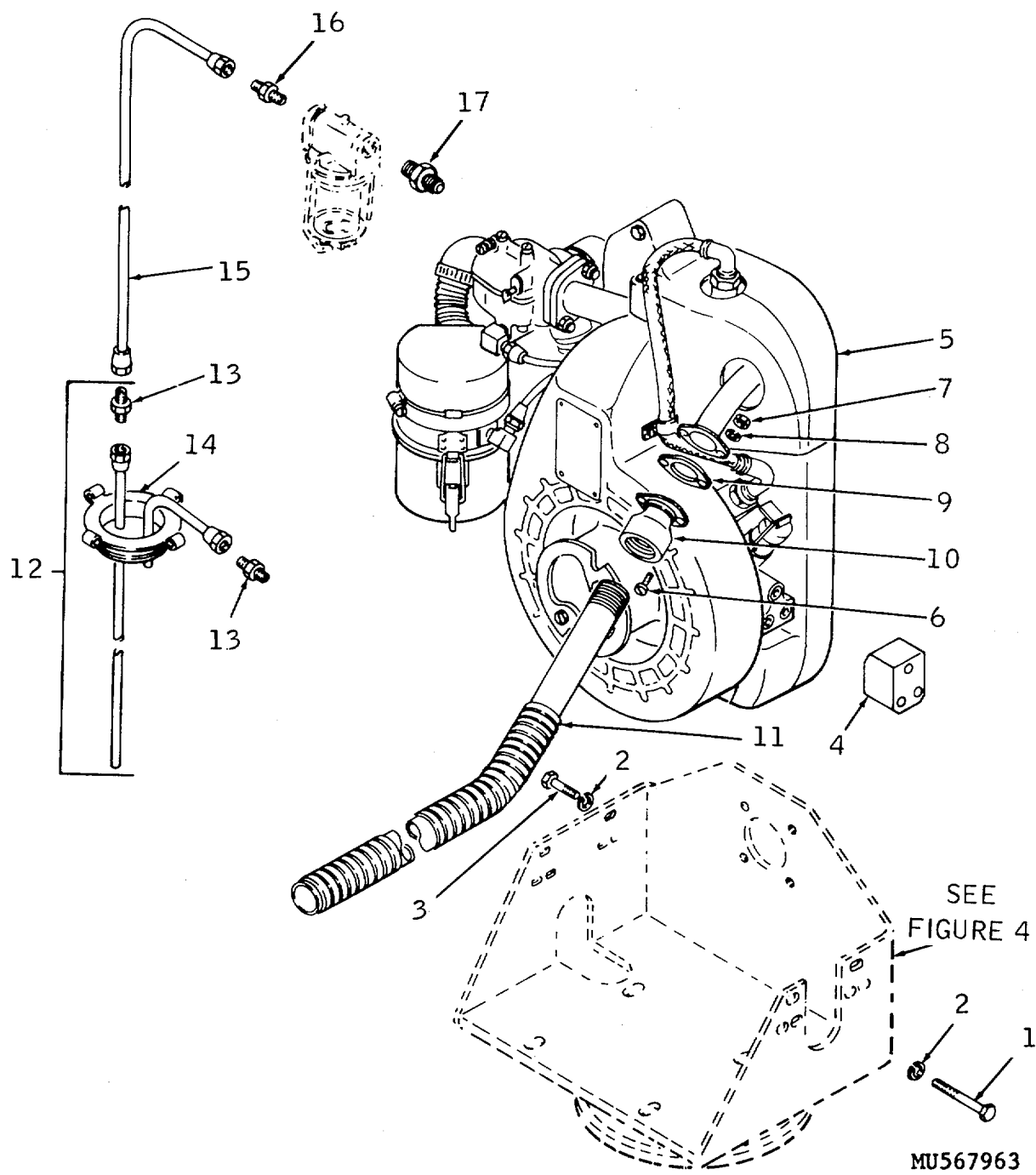


Figure 2. Electric motor installation group.



MU567963

Figure 3. Gasoline engine installation group.

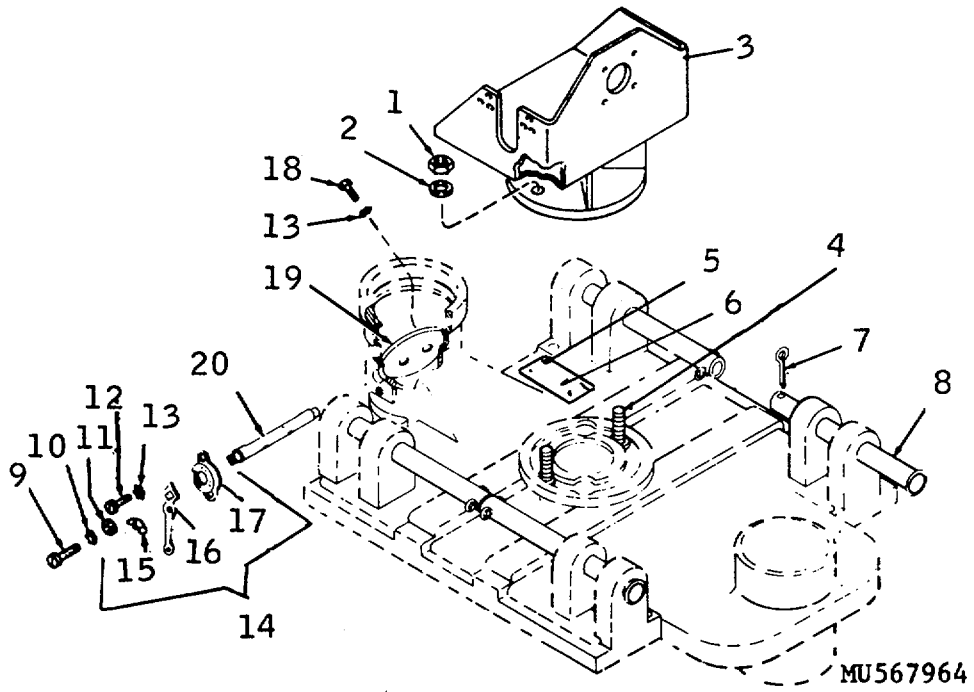
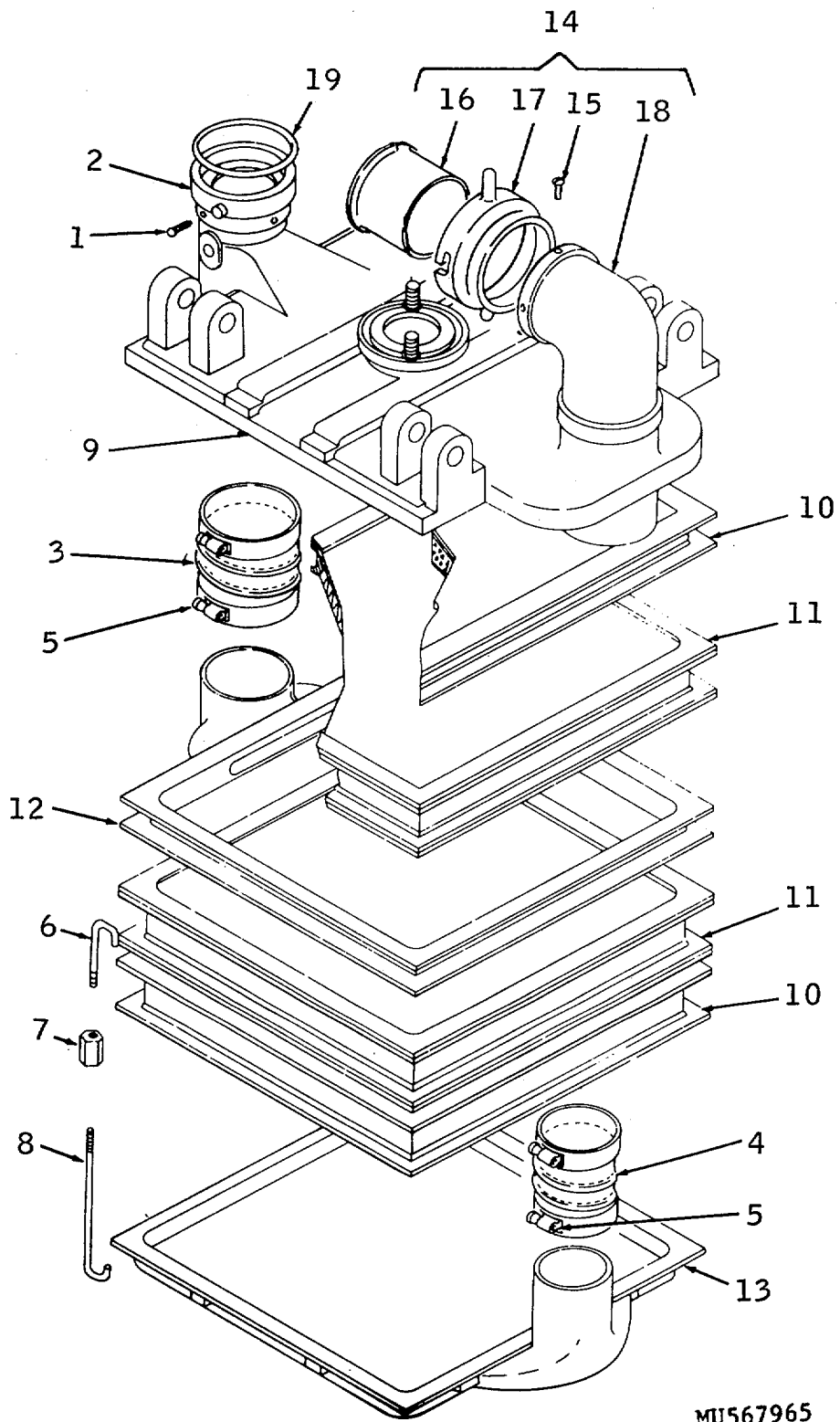


Figure 4. Top manifold group.



MU567965

Figure 5. Canister assembly group.

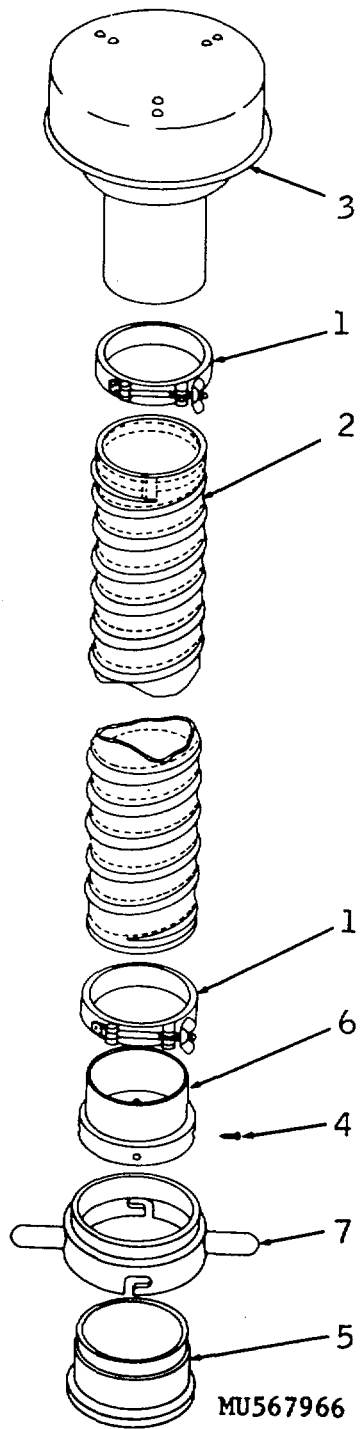


Figure 6. Air inlet assembly group.

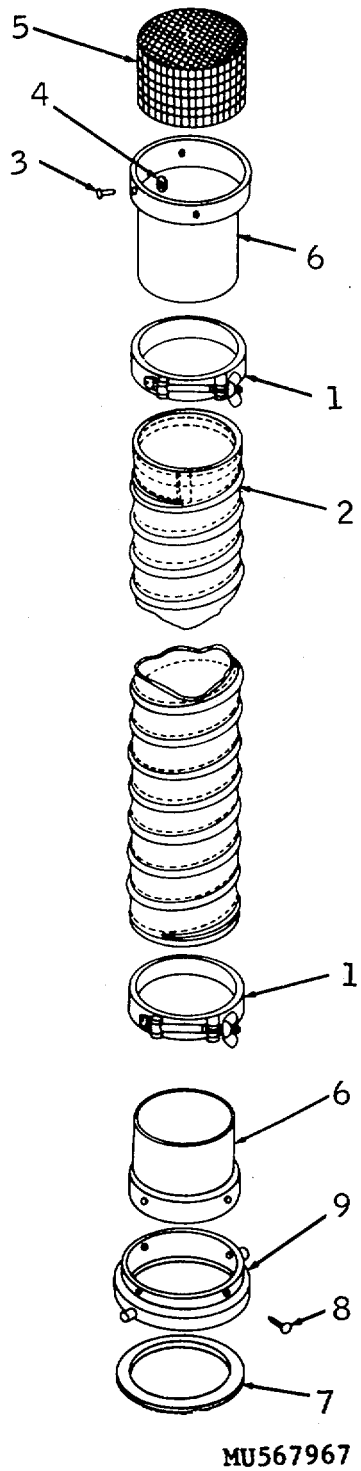


Figure 7. Air outlet assembly group.

SECTION IV
FEDERAL STOCK NUMBER AND REFERENCE NUMBER
CROSS-REFERENCE TO FIGURE AND ITEM NUMBER INDEX
Federal stock numbers cross-reference to figure number and item number

<i>Federal Stock Number</i>	<i>Figure No.</i>	<i>Item No.</i>	<i>Federal Stock Number</i>	<i>Figure No.</i>	<i>Item No.</i>
4240-050-8781	5	11	5305-984-4984	4	9
4240-066-4476	3	10	5305-984-6208	4	12
4240-066-4480	4	14	5305-984-6210	3	6
4240-076-3473	3	12	5305-984-6211	4	18
4240-256-9094	5	10	5306-639-0461	4	4
4240-340-2669	4	19	5310-045-3296	3	8
4240-343-7931	4	20	5310-082-1404	4	11
4240-368-6288	6	3	5310-209-0788	4	10
4720-066-4479	5	4	5310-457-8237	4	15
4720-066-46-19	5	3	5310-596-7691	4	13
4720-387-9800	3	11	5310-809-3079	4	2
4720-542-3460	6	2	5310-877-5795	4	1
	7	2	5319-934-9758	3	7
4720-889-2368	3	15	5315-013-7214	4	7
4730-186-7797	3	17	5330-066-4475	3	9
4730-187-0485	3	13		5	19
4730-187-0842	3	16		7	7
4730-278-2505	6	1	5935-681-4819	2	6
	7	1	6145-112-8671	2	5

Reference number cross-reference to manufacturer's code, figure number and item number

<i>Reference No.</i>	<i>Mfg Code</i>	<i>Fig No.</i>	<i>Item No.</i>	<i>Reference No.</i>	<i>Mfg Code</i>	<i>Fig No.</i>	<i>Item No.</i>
AN815-5	88044	3	13	C5-19-965	81361	3	11
AN816-5	88044	3	16	D5-19-1821	81361	5	11
AN911-1	88044	3	17	D5-19-665	81361	5	12
B5-19-1803	81361	4	14	D5-19-673	81361	5	10
B5-19-1812	81361	3	9	D5-19-701	81361	5	13
B5-19-1813	81361	3	10	FFN845	81348	4	15
B5-19-679	81361	1	9	JC580	81348	2	5
		5	19	MIL-C-1283	81349	3	14
		7	7	MS21044N8	96906	4	1
B5-19-682	81361	4	4	MS24665-359	96906	4	7
B5-19-716	81361	5	14	MS27183-19	96906	4	2
B5-19-719	81361	5	6	MS27183-6	96906	4	11
B5-19-792	81361	5	8	MS28741-5-1200	96906	3	15
B5-19-793	81361	5	7	MS35206-227	96906	4	9
B5-19-925	81361	4	20	MS35206-261	96906	4	12
B5-19-926	81361	4	19	MS35206-263	96906	3	6
B5-19-960	81361	4	8	MS35206-264	96906	4	18
C5-19-1796	81361	6	2	MS35335-30	96906	4	10
		7	2	MS35335-32	96906	4	13
C5-19-1800-1	81361	5	4	MS35337-24	96906	3	8
C5-19-1800-2	81361	5	3	MS35649-202	96906	3	7
C5-19-1816	81361	3	12	MS35842-16	96906	5	5
C5-19-735	81361	6		421-75-500W	98625	6	1
C5-19-736	81361	7				7	1
C5-19-737	81361	6	3	7056	74545	2	6

By Order of the Secretary of the Army:

CREIGHTON W. ABRAMS
General, United States Army
Chief of Staff

Official:

VERNE L. BOWERS,
Major General, United States Army,
The Adjutant General.

Distribution:

To be distributed in accordance with DA Form 12-28 (qty rqr block No. 26) Organizational Maintenance Requirements for Field Collective Protection Equipment,

CHANGE
NO. 1

HEADQUARTERS
DEPARTMENT OF THE ARMY
WASHINGTON, DC, 29 May 1990

**TECHNICAL MANUAL
ORGANIZATIONAL MAINTENANCE REPAIR PARTS AND SPECIAL TOOLS LIST
FOR
FILTER UNIT, GAS-PARTICULATE, EMD AND GED, 300 CFM,
ABC-M6 AND ABC-M6A1**

TM 3-4240-241-20P, 26 October 1972, is changed as follows:

1. The purpose of this change is to update guidance for disposal, handling, and storage of filters.
2. Page 7, Section II, Column (1), Figure 5, Item 10. Change SMR code from "PA OZ Z" to PAOZA.
3. File this change sheet in front of the publication for reference purposes.

By Order of the Secretary of the Army:

CARL E. VUONO
General, United States Army
Chief of Staff

Official:

WILLIAM J. MEEHAN II
Brigadier General, United States Army
The Adjutant General

Distribution:

To be distributed in accordance with DA Form 12-28 (block 266), maintenance requirements for TM 3-4240-241-20P.

RECOMMENDED CHANGES TO EQUIPMENT TECHNICAL PUBLICATIONS



THEN... JOT DOWN THE DOPE ABOUT IT ON THIS FORM, CAREFULLY TEAR IT OUT, FOLD IT AND DROP IT IN THE MAIL!

SOMETHING WRONG WITH THIS PUBLICATION?

FROM: (PRINT YOUR UNIT'S COMPLETE ADDRESS)

DATE SENT

PUBLICATION NUMBER

PUBLICATION DATE

PUBLICATION TITLE

BE EXACT... PIN-POINT WHERE IT IS

IN THIS SPACE TELL WHAT IS WRONG AND WHAT SHOULD BE DONE ABOUT IT:

PAGE NO.

PARA-GRAPH

FIGURE NO.

TABLE NO.

TEAR ALONG PERFORATED LINE

PRINTED NAME, GRADE OR TITLE, AND TELEPHONE NUMBER

SIGN HERE:

DA FORM 2028-2 JUL 79

PREVIOUS EDITIONS ARE OBSOLETE.

P.S.—IF YOUR OUTFIT WANTS TO KNOW ABOUT YOUR RECOMMENDATION MAKE A CARBON COPY OF THIS AND GIVE IT TO YOUR HEADQUARTERS.

